

STEREOSTONE™

High Quality Rock Speakers and Lights

Home

Boats

Edge Models

SoundStealth

Side Models

On Stone

Clusters

Rocks Lights

Technology

Warranty

Edge Model

Side Models

On Stone

Clusters

SoundStealth Series

No Visible Speaker Holes

Garden/Patio Models

Choice of Loudspeaker System

Best (Commercial)

250 Watt / 6-1/2" Two-Way 8 ohms commercial model rated best in overall high fidelity performance. For use in theme parks and where a large wide area of sound coverage is needed.

Sensitivity 91 db spl 1 watt / 1 meter
Freq. Response 55hz - 20 khz +/- 3db

Better (Standard)

125 Watt / 6-1/2" Two-Way 8 ohms better for small & medium sized areas including pools, spas and tennis courts.

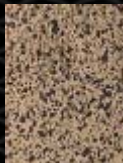
Sensitivity 89 db spl 1 watt / 1 meter
Freq. Response 55hz - 20 khz +/- 3db

Good (Jr. or Industrial)

100 Watt / 6-1/2" Duo Cone 8 ohms good performance for pools, spas, small gardens, yards & patios, balconies.

Sensitivity 89 db spl 1 watt / 1 meter
Freq. Response 65hz - 70 khz +/- 3db

Available in these colors:



River Rock
Brown



River Rock
Gray



Sierra Stone

Shown in River Rock Gray
15"W x 11"D x 11"H

Classic Stone

Shown in
River Rock Brown
19"W x 13"D x 11"H



River Rock

Shown in River Rock Gray
19 1/2"W x 16"D x 8.5"H

River Rock Omni Surround

Shown in River Rock Gray
21"W x 19"D x 9-1/2"H



The Omni Surround models are 16 ohms and use two loudspeakers in each rock. This allows you to connect as many as up to eight pairs of loudspeakers to a single stereo amplifier without special line transformers. They cover 360 degrees of dispersion, giving the greatest area of sound coverage over large areas and on long walkways where smooth continuous sound coverage is desired.

Our exclusive loudspeaker design uses dual spider woofers found only in the most expensive professional loudspeakers. Along with ferrifluid cooling technology, we use santoprene weather resistant surround suspension and the latest poly mica cone materials. This permits greater power handling with lower distortion. We also include auto reset overpower protection.

Large Yard Models

Choice of Loudspeaker System

Best

250 Watt / 8 ohms 8" Two Way Dual Spider with 1" Neodymium-Titanium tweeter.

Sensitivity 93 db spl 1 watt / 1 meter
Freq. Response 48hz - 20 khz +/- 3db

Good

125 Watt / 8 ohms 8" Two Way Dual Spider with 3/4" polydome tweeter.

Sensitivity 91 db spl 1 watt / 1 meter
Freq. Response 50hz - 20 khz +/- 3db

Soundstealth™ allows us to get great sound and at the same time totally disguise the loudspeaker, so no holes in the rock are seen. Its virtually impossible to distinguish the Stereostone SoundStealth™ models from a real rock.



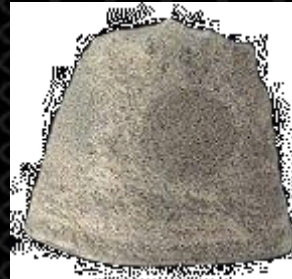
Yosemite Stone

Shown in
River Rock Brown
191"W x 13"D x 17"H



Gibraltar Stone

Shown in River Rock Gray
20"W x 15"D x 15"H



Stereo Rock

Shown in River Rock Gray
With dual 8" speakers
22"W x 22"D x 19"H (55lbs)



Stereo Rock Stealth Jr.

Shown in River Rock Brown
With dual 6.5" speakers
22"W x 22"D x 19"H (55lbs)



STEREOSTONE™ INC. * 7470 Greenbush Ave., N. Hollywood, CA 91605
Telephone: 800 350-7866 * 951 244-9409 * FAX 951 244-8679
info@stereostone.com / www.stereostone.com